

**PART A. INSTRUCTION SHEET FOR LOCK SERVICE PACK
4G7Z-6321991-BB AND 4G7Z-6343262-CA**

KIT — 4G7Z-6321991-BB AND 4G7Z-6343262-CA				
Item #	Part Number	Description	Used In Package	Quantity
A	SK 4G7V-6321991-BB	Instruction Sheet	All	1
B1	324341	Tumbler # 1	All	4
B2	324342	Tumbler # 2	All	4
B3	324343	Tumbler # 3	All	4
B4	324344	Tumbler # 4	All	4
B5	324345	Tumbler # 5	All	4
C	46969	Tumbler Springs	All	8
D1	313008	Cylinder	4G7Z-6321991-BB	1
D2	312980	Cylinder	4G7Z-6343262-CA	1
E	48039	Grease Pack	All	1
F1	313007	Lock Case	4G7Z-6321991-BB	1
F2	312981	Lock Case	4G7Z-6343262-CA	1
G	94978	E-Clip	All	1
H	324421	Shutter Cover (Stainless)	All	1
I	56042	Detent Spring	4G7Z-6321991-BB	1
J	94813	Detent Pin	4G7Z-6321991-BB	1
K	599656	Shutter Assembly	All	1
L	56031	Shutter Spring	All	1
M	48106	Gasket	All	1
N	48333	Gasket	All	1
O	382123	Bezel	All	1
P1	692048	Lever	4G7Z-6321991-BB	1
P2	692201	Lever Assembly	Luggage Lock (red spring)	1
P3	692202	Lever Assembly	Engine Compartment Lock	1
Q	381577	Spacer	4G7Z-6343262-CA	1
R	56116	Return Spring	4G7Z-6343262-CA	1
S	93442	E-Clip	4G7Z-6343262-CA	1

NOTE: This Instruction Sheet is not an inspection document.

***Not all parts are in all kits.**

SERVICE PROCEDURE:

1. Determine the matching key cut depth at each key station, any of the following three methods may be used to determine the key cut depth at each key station.
 - 1a. Use the OEM key code provided with the vehicle and look up the cut pattern in the key code table. (The selling dealer should have the key code or the customer may be able to provide it.) A key code table comes with the Rotunda Key Cutter, Part No. 011 00215.
 - 1b. Use a "key decoder" to determine each cut height. A decoder may be included with the Rotunda Key Cutter, Part No. 011 00215 or can be ordered separately through Rotunda Part No. 011 RMT61. Equivalent decoders are commonly available through the locksmith industry. (A key Decoder is a plate with an elongated slot corresponding to the different key cut heights).
 - 1c. Using the customer's key, measure the key cut depth at each key station (refer to Figure 2).

Write down the key cut depths, in terms of the depth code, not the actual measurements of the depths, in the following order:

Station 1	Station 2	Station 3	Station 4	Station 5	Station 6	Station 7	Station 8



2. Verify that a shutter is installed in the front of the lock cylinder. If not, then insert the shutter spring into the round hole at the front of the lock cylinder and the shutter into the rectangular depression located at the front of the lock cylinder.
3. If required, insert the detent spring (I) into the groove located on the interior surface of lock case (E1-6).
4. If required, insert the detent pin (J) into the groove located on the interior surface of the lock case.
5. Select the required tumblers (B1-B5) according to the key cut depths, for key stations 2, 3, 4, 5, 6 and 7. For example, if the key cut depths codes are 53214124, then use B5 for Station 1, B3 for Station 2, B2 for Station 3, B1 for Station 4, etc. and ignore Station 7 and Station 8.
6. Insert one tumbler spring (C) into each of the holes located at the end of the tumbler wards on the lock cylinder sub-assembly (D1 or D2).
7. Insert the required tumblers (B1-B5) into tumbler wards in the proper orientation (refer to Figure 3) and in the sequence that match the key cut depths, for key stations 2, 3, 4, 5, 6 and 7.
8. Insert the key into the keyhole and verify that all tumblers are flush with the lock cylinder sub-assembly's exterior surface.
9. With the key in the lock cylinder sub-assembly, apply the included grease to the tumbler wards.
10. With the key in the lock cylinder sub-assembly, insert the lock cylinder sub-assembly into the lock case (F1-F2).
11. Rotate the lock cylinder sub-assembly within the lock case at least ten times so that the grease applied to the tumbler wards is distributed along the inner surface of the lock case and the exterior surface of the lock cylinder sub-assembly.
12. Remove the key from the lock cylinder sub-assembly while keeping the lock cylinder sub-assembly within the lock case.
13. Place the shutter cover over the lock case and the lock cylinder. Use a pair of small pliers to gently bend the three (3) tabs on the shutter cover inward toward the center of the lock case to secure the lock cylinder within the lock case.
14. Assembly Spacer (Q) on the back of the Luggage or Engine Compartment lock.
15. For the Luggage Compartment use the lever assembly (P3) with the red spring. For the Engine Compartment use the Lever assembly (P3) with the bright spring. For the Door use lever (P1).
16. Assembly the required lever to the tail of the cylinder in the same orientation as on lock that was removed from the vehicle.
17. Install the E-clip (G) to the back of the lock cylinder sub-assembly to secure the lever or spacer. Note that the tab on the E-clip should fit into the indentation on the back of the lock cylinder sub-assembly. (Refer to Figure 4) for proper orientation of the E-clip.
18. Use the key to check the operations of the lock.
19. On the face of the lock place the thin gasket (M) and secure with the Bezel.
20. Attach the thick Gasket (N) on top of the Bezel.



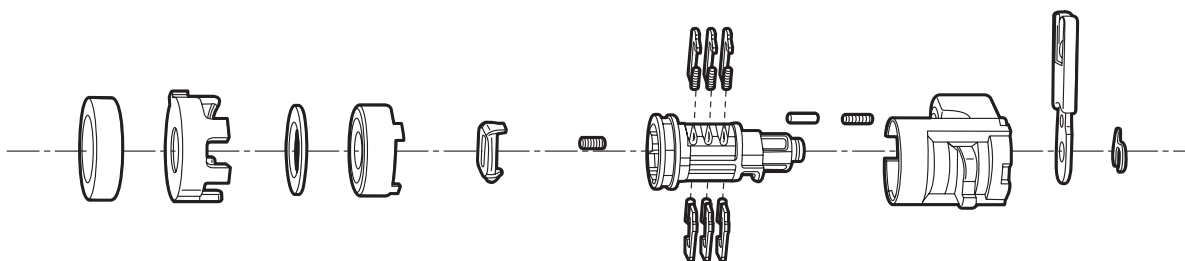


FIGURE 1

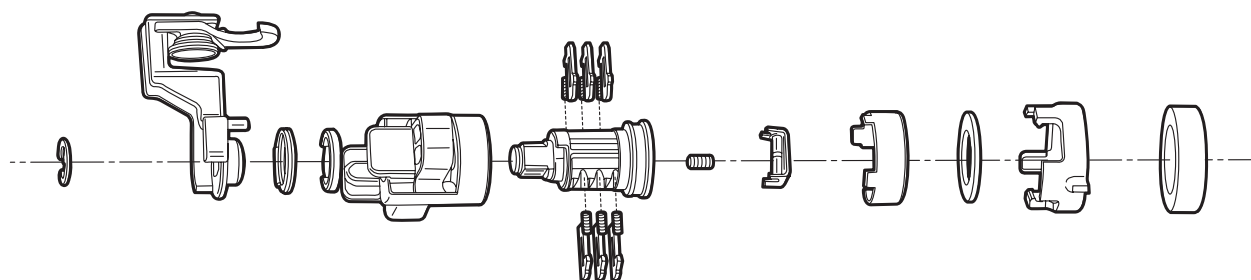


FIGURE 1A



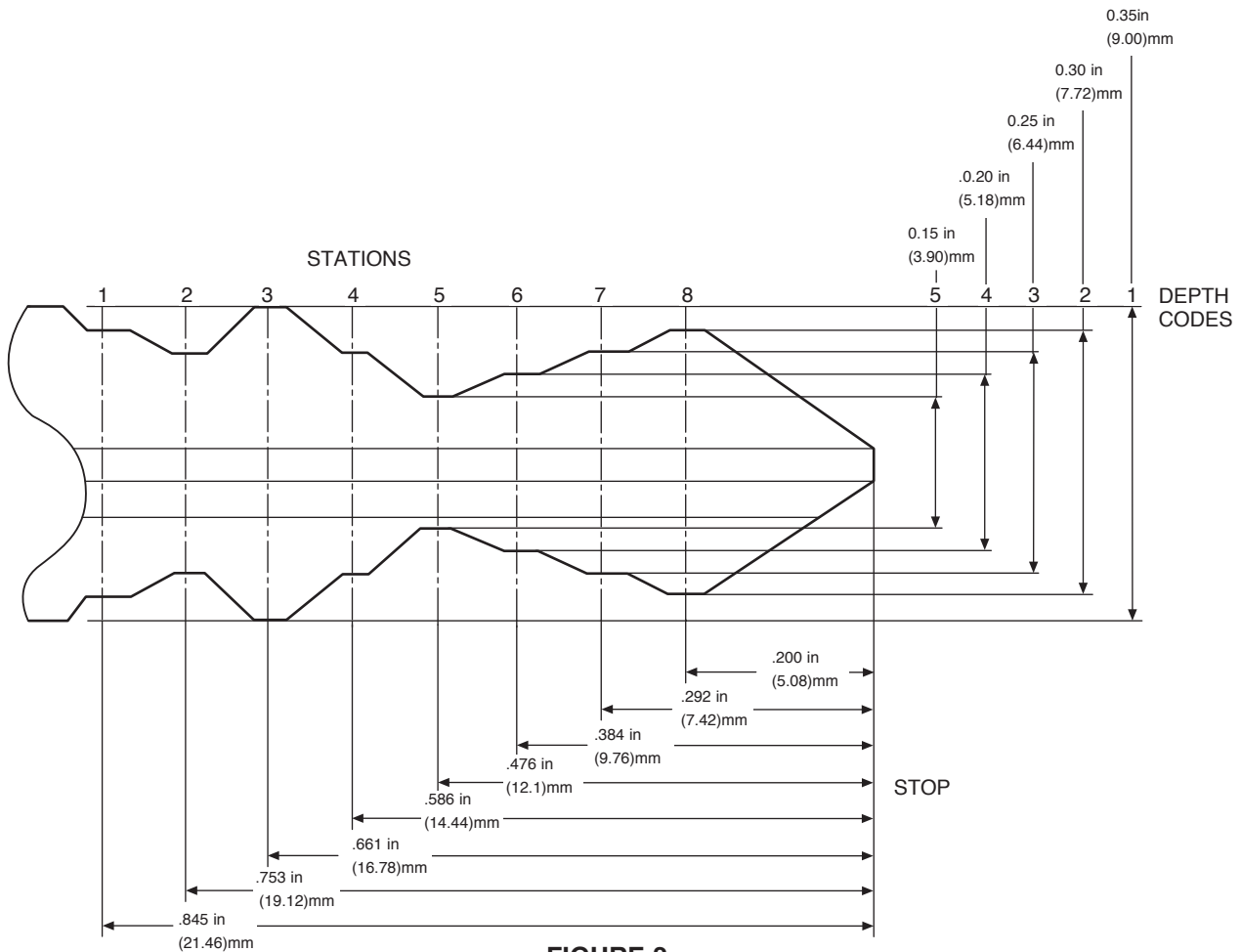


FIGURE 2



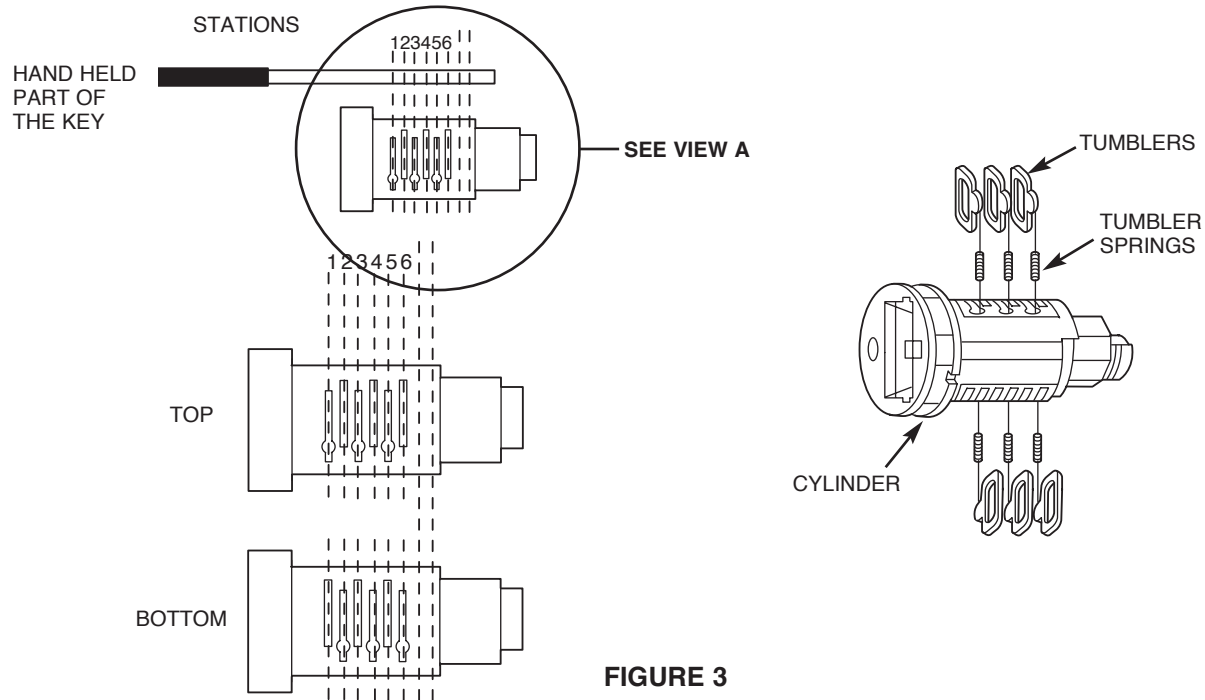


FIGURE 3

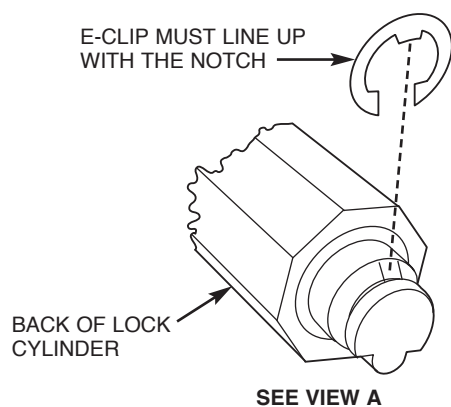


FIGURE 4

