

**PART A. INSTRUCTION SHEET FOR LOCK SERVICE PACK
6R3Z-6343262-A AND 6R3Z-6343262-B**

KIT — 6R3Z-6343262-A AND 6R3Z-6343262-B				
Item #	Part Number	Description	Used In Package	Quantity
A	SK 6R3A-6343262-AA	Instruction Sheet	All	1
B1	324341	Tumbler # 1	All	4
B2	324342	Tumbler # 2	All	4
B3	324343	Tumbler # 3	All	4
B4	324344	Tumbler # 4	All	4
B5	324345	Tumbler # 5	All	4
C	46969	Tumbler Springs	All	8
D	312043	Cylinder	All	1
E	312044	Lock Case	All	1
F	48039	Grease Pack	All	1
G	596656	Shutter Spring	All	1
H	56031	Shutter Assembly	All	1
I	322839	Shutter Cover (Stainless)	All	1
J	48106	Gasket	All	1
K	312066	Driver	All	1
L	56086	Torsion Spring	All	1
M	47927	Grommet, Mntg Stud	All	2
N	381439	Bezel	All	1
O	381453	Seal, Bezel	All	1
P	598543	Switch	6R3Z-6343262-B	1

NOTE: This Instruction Sheet is not an inspection document. Not all parts listed are included in all packages.

SERVICE PROCEDURE:

DO NOT ASSEMBLY SWITCH BEFORE LOCK IS ASSEMBLED.

1. Determine the matching key cut depth at each station, any of the following three methods may be used to determine the key cut depth at each key station.
 - 1a. Use the OEM key code provided with the vehicle and look up the cut pattern in the key code table. (The selling dealer should have the key code or the customer may be able to provide it). A key code table comes with the Rotunda Key Cutter, Part No. 011 00215.
 - 1b. Use a "key decoder" to determine each cut height. A decoder may be included with the Rotunda Key Cutter, Part No. 011 00215 or can be ordered separately through Rotunda Part No. 011 RMT61. Equivalent decoders are commonly available through the locksmith industry. (A key decoder is a plate with an elongated slot corresponding to the different key cut heights).
 - 1c. Using the customer's key, measure the key cut depth at each key station (refer to Figure 2). Write down the key cut depths, in terms of the depth code, not the actual measurements of the depths, in the following order:

Station 1	Station 2	Station 3	Station 4	Station 5	Station 6	Station 7	Station 8



2. Insert the shutter spring into the round hole at the front of the lock cylinder.
3. Insert the shutter assembly into the rectangular depression at the front of the cylinder.
4. Select the required tumblers (B1, B2, B3, B4, or B5) according to the key cut depths, for key stations 3, 4, 5, 6, 7, and 8.

For example, if the key cut depths codes are 53214124, then use B2 for Station 3, B1 for Station 4, B4 for Station 5, B1 for Station 6, etc. and ignore Station 1 and Station 2.
5. Insert one tumbler spring into each of the holes located at the end of the tumbler wards on the lock cylinder sub-assembly.
6. Insert the required tumblers into tumbler wards in the proper orientation (refer to Figure 3) and in the sequence that match the key cut depths, for key stations 3, 4, 5, 6, 7, and 8.
7. Insert the key into the keyhole and verify that all tumblers are flush with the lock cylinder's exterior surface.
8. With key in lock cylinder, apply the included grease on top of the tumblers.
9. Place torsion spring over the "L" shaped end of driver, with the bent leg of spring down and into narrow slot.
10. Place the "L" shaped end of driver in matching slot on cylinder.
11. Insert driver/spring/cylinder assembly into case. Pass driver notch through the matching notch on case.
12. Rotate cylinder with key 360 degrees, then push back until lock fully seats, then release and allow the lock to rotate back 90 degrees into the key out position.
13. Cycle lock to verify operation of the lock, turn the key clockwise until it stops. When key is released, there should be a spring torque that will return the lock cylinder to the position at which the key can be removed.
14. Rotate the lock cylinder within the lock case at least ten (10) times so that the grease applied to the tumblers is distributed along the inner surface of the lock case and the exterior surface of the lock cylinder.
15. Remove the key from the lock cylinder.
16. Place the shutter cap over the case by locating the large cut out to the case/tumbler opening. Crimp the legs of the cap below the edge of the case to secure.
17. Place gasket inside the back of bezel.
18. Place seal onto front of black plastic bezel.
19. Place bezel assembly on face of lock and snap into place.
20. Insert mounting stud grommets into case mounting holes.

NOTE: For part number 6R3Z-6343262-B, complete steps 21 and 22.

21. With a punch depress case material on both sides of middle slot as shown in Figure 4 to secure switch.
22. Use the key to check operations of the lock. If switch is part of the assembly listen for an audible click of the switch when lock is rotated to lock and unlock.



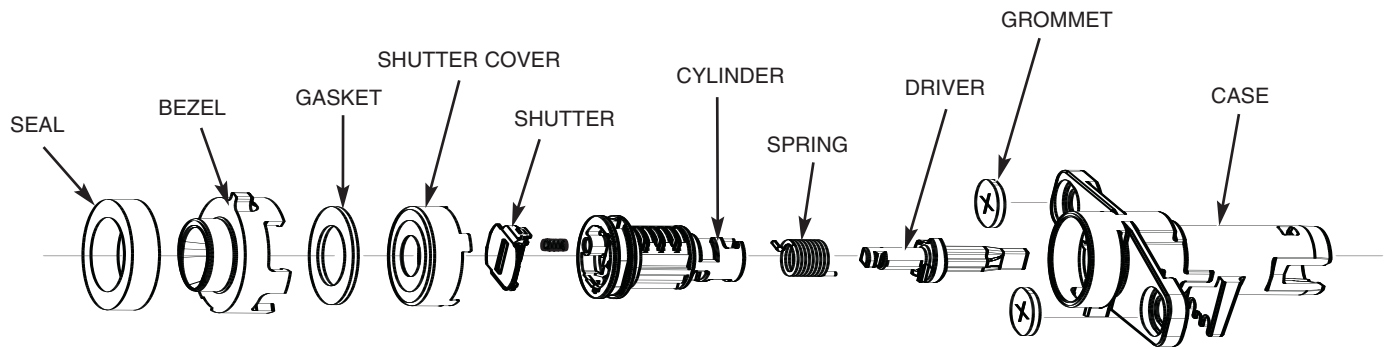


FIGURE 1

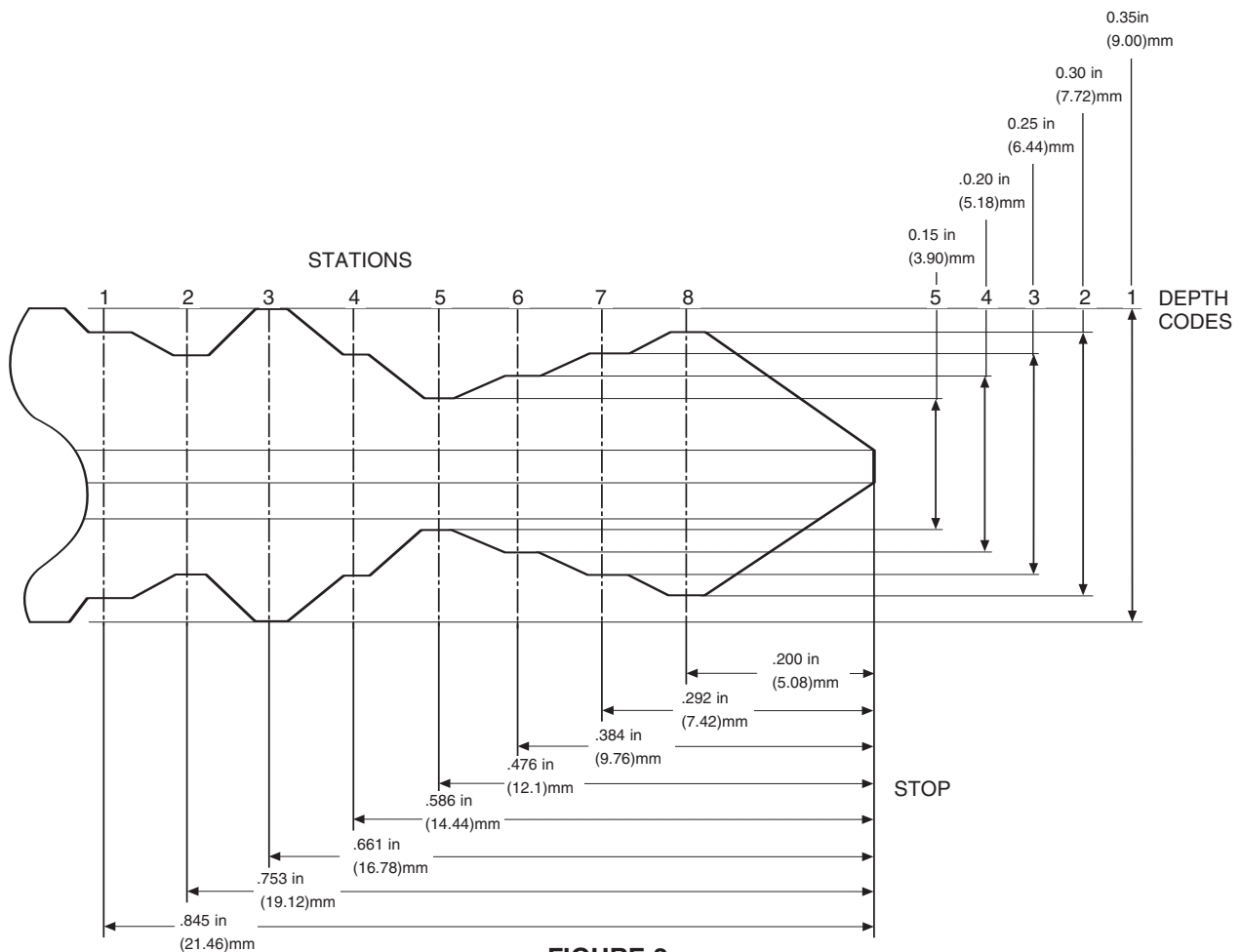


FIGURE 2



CPR © 2006 FORD MOTOR COMPANY
DEARBORN, MICHIGAN 48121
1-06

SK 6R3A-6343262-AA

SHEET 3 OF 4

PART A. INSTRUCTION SHEET FOR
LOCK SERVICE PACK
6R3Z-6343262-A AND 6R3Z-6343262-B

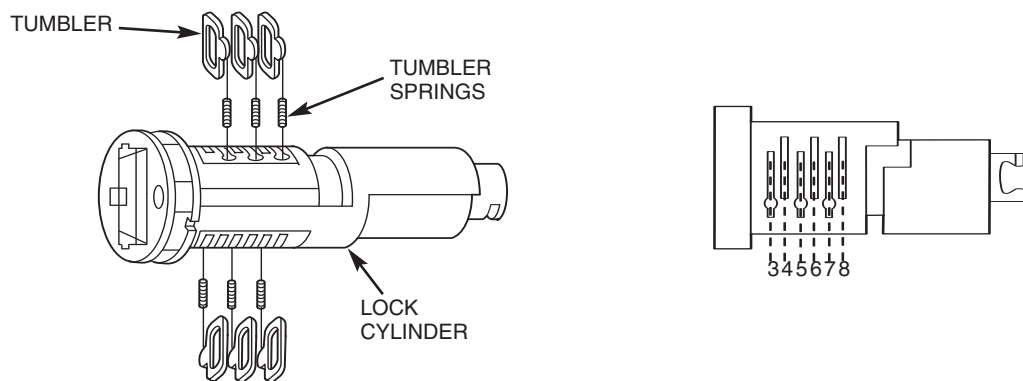


FIGURE 3

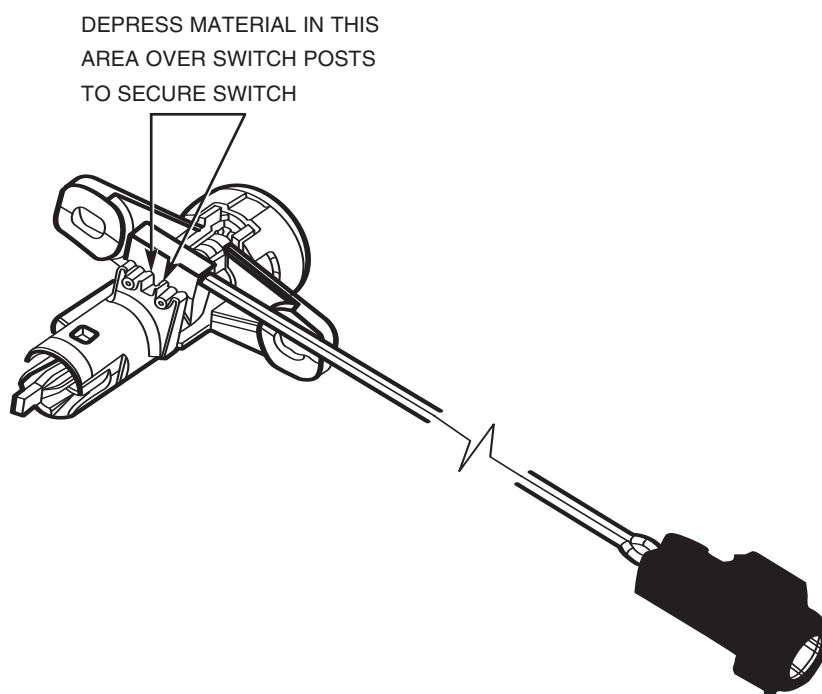


FIGURE 4

