

**TO:** ALL AUTHORIZED SERVICE ACCOUNTS  
AS-1975 MANUAL OWNERS

**SUBJECT:** Villager/Quest Ignition Lock Removal

**NO:** AS-1142  
**DATE:** 4-2-96  
**FILE IN:** BULLETIN BINDER

## Villager/Quest Ignition Lock Removal

In 1996, the new Ford 8-Cut system was introduced to the Mercury Villager and Nissan Quest. Like other vehicles using the Ford 8-Cut system, the Villager/Quest ignition is a push-button retained lock. Due to the unique design of the Villager/Quest ignition, however, it is critical that the lock be removed properly to avoid costly damage to the lock and related components.

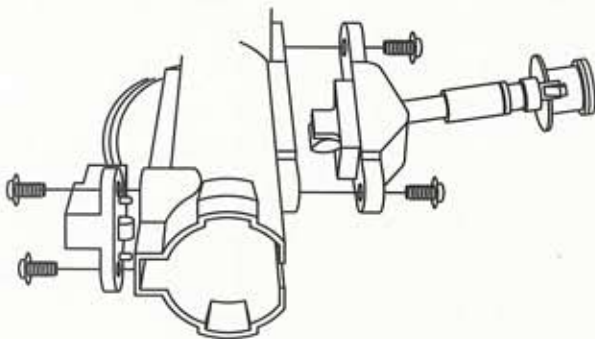
Unlike other Ford 8-Cut ignitions, removing the Villager/Quest ignition requires the removal of the buzzer actuator switch and the key/shifter interlock cable from the lock housing. Neglecting this step will cause costly damage to both the lock, the lock housing, the buzzer switch and the key/shift cable. Plus, when removing the lock from the housing, care must be taken not to damage the #46982 lever spring.

To remove the Villager/Quest ignition, first remove the column shroud from the column. Then use a #2 Phillips screw driver to remove the buzzer switch and key/shifter interlock cable mounting screws (two each). (*Illustration 1.*)

Use a key or pick the lock and turn the plug to the ON or RUN position. Depress the lock retainer and slowly slide the lock from the housing about 1/2" or until the lever spring appears in the access hole found just behind the buzzer switch location. Be careful as this spring may pop out of the lock housing and become lost. Remove the spring through the access hole. (*Illustration 2.*)

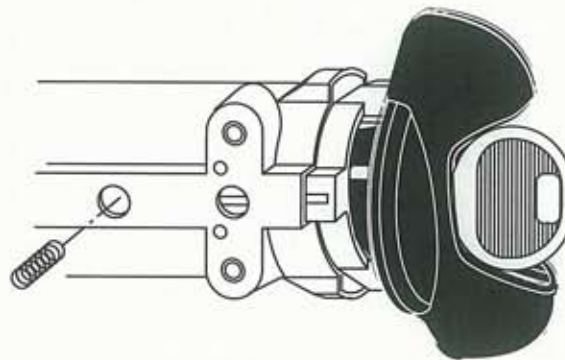
Remove the lock from the housing.

Should the lever spring become lost or damaged, more springs are available in the #703373 Ford 8-Cut Pinning Kit.



# 1

Both the buzzer actuator and key/shifter interlock cable must be removed in order to service the Villager/Quest ignition.



# 2

Be careful not to lose or damage the #46982 lever spring. The spring loading hole is found just behind the buzzer actuator mounting location.