

2. Insert the shutter spring into the round hole at the front of the lock cylinder.
3. Insert the shutter assembly into the rectangular depression at the front of the cylinder.
4. Select the required tumblers (B1, B2, B3, B4, or B5) according to the key cut depths, for key stations 3, 4, 5, 6, 7, and 8.

For example, if the key cut depths codes are 53214124, then use B2 for Station 3, B1 for Station 4, B4 for Station 5, B1 for Station 6, etc. and ignore Station 1 and Station 2.
5. Insert one tumbler spring into each of the holes located at the end of the tumbler wards on the lock cylinder sub-assembly.
6. Insert the required tumblers into tumbler wards in the proper orientation (refer to Figure 3) and in the sequence that match the key cut depths, for key stations 3, 4, 5, 6, 7, and 8.
7. Insert the key into the keyhole and verify that all tumblers are flush with the lock cylinder's exterior surface.
8. With key in lock cylinder, apply the included grease on top of the tumblers.
9. Place torsion spring over the "L" shaped end of driver, with the bent leg of spring down and into narrow slot.
10. Place the "L" shaped end of driver in matching slot on cylinder.
11. Insert driver/spring/cylinder assembly into case. Pass driver notch through the matching notch on case.
12. Rotate cylinder with key 360 degrees, then push back until lock fully seats, then release and allow the lock to rotate back 90 degrees into the key out position.
13. Cycle lock to verify operation of the lock, turn the key clockwise until it stops. When key is released, there should be a spring torque that will return the lock cylinder to the position at which the key can be removed
14. Rotate the lock cylinder within the lock case at least ten (10) times so that the grease applied to the tumblers is distributed along the inner surface of the lock case and the exterior surface of the lock cylinder.
15. Remove the key from the lock cylinder.
16. Place the shutter cap over the case by locating the large cut out to the case/tumbler opening. Crimp the legs of the cap below the edge of the case to secure.
17. Place gasket inside the back of bezel.
18. Place seal onto front of black plastic bezel.
19. Place bezel assembly on face of lock and snap into place.
20. Insert mounting stud grommets into case mounting holes.

NOTE: For part number 6R3Z-6343262-B, complete steps 21 and 22.

21. With a punch depress case material on both sides of middle slot as shown in Figure 4 to secure switch.
22. Use the key to check operations of the lock. If switch is part of the assembly listen for an audible click of the switch when lock is rotated to lock and unlock.



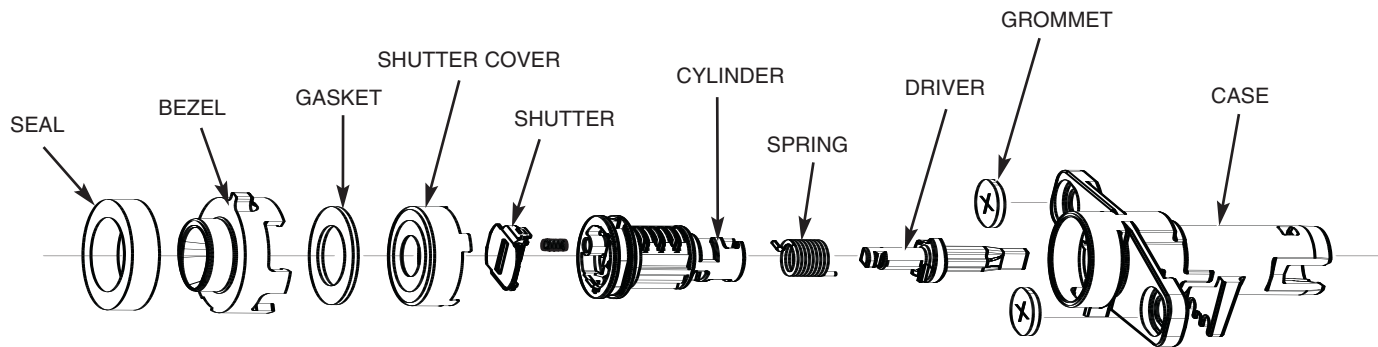


FIGURE 1

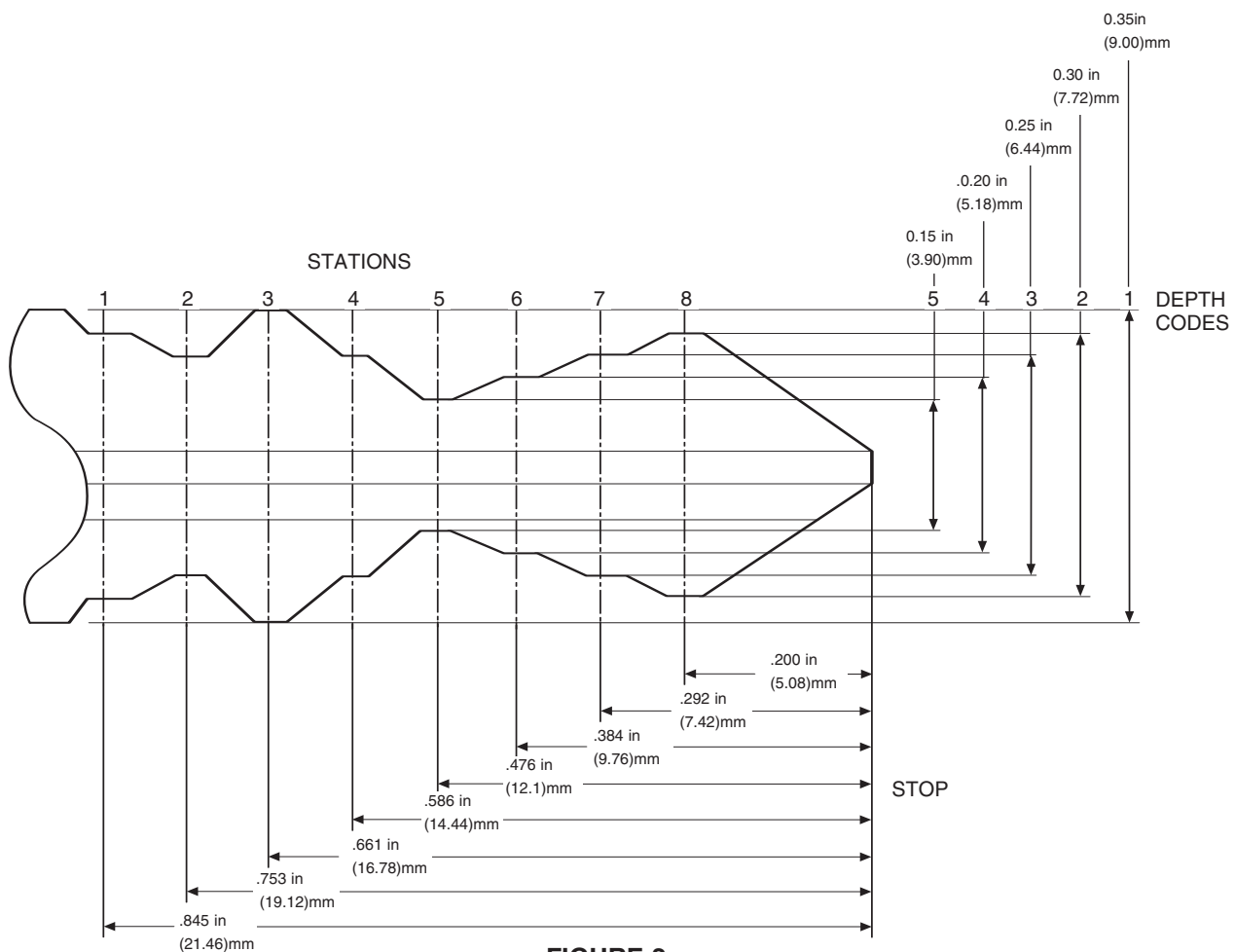


FIGURE 2



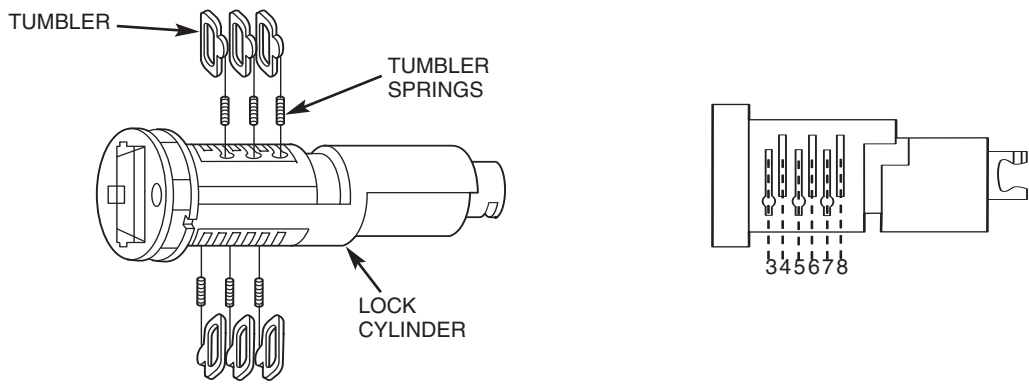


FIGURE 3

DEPRESS MATERIAL IN THIS
AREA OVER SWITCH POSTS
TO SECURE SWITCH

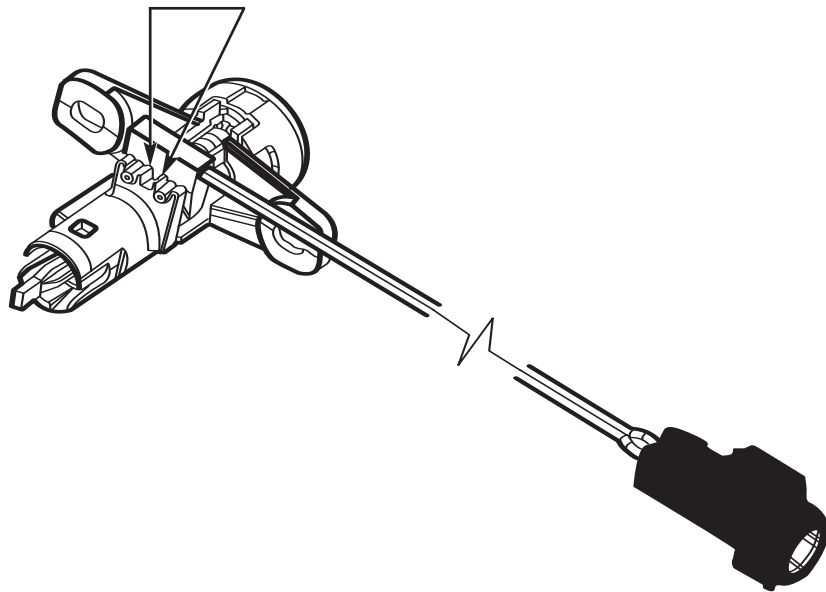


FIGURE 4

